

2024 Pavement Survey Update

Carson City

Douglas County

1



Pavement Survey November & December 2024

PCI Range	Condition Category	Typical Distresses Present
100 - 86	<i>Good</i>	Very little distress. Minor cracking.
85 - 71	<i>Satisfactory</i>	Mostly low-severity distress, with the possibility of some medium-severity distress. Little to no fatigue cracking. Minor rutting.
70 - 56	<i>Fair</i>	More medium-severity distress, including some fatigue cracking. Patching and rutting are typically present.
55 - 41	<i>Poor</i>	Medium- and high-severity cracking, including notable low- and/or medium-severity fatigue cracking, patching, and rutting.
40 - 26	<i>Very Poor</i>	Significant amounts of cracking, including notable medium- and high-severity fatigue cracking, raveling, and patching. Cracking is medium- to high-severity. Rutting may approach 0.5 inch.
25 - 11	<i>Serious</i>	Significant amounts of cracking, including considerable amounts of medium- and high-severity fatigue cracking, raveling, and patching. Majority of cracking is medium- to high severity. Rutting may approach 1 inch.
10 - 0	<i>Failed</i>	Significant amounts of cracking, including medium- and high-severity fatigue cracking, raveling, and patching. Cracking is generally high-severity. Possible high-severity rutting.



2

Pavement Survey Carson City Road Conditions



Figure 5. Pavement in *Good* condition category (PCI 100-86).

Good

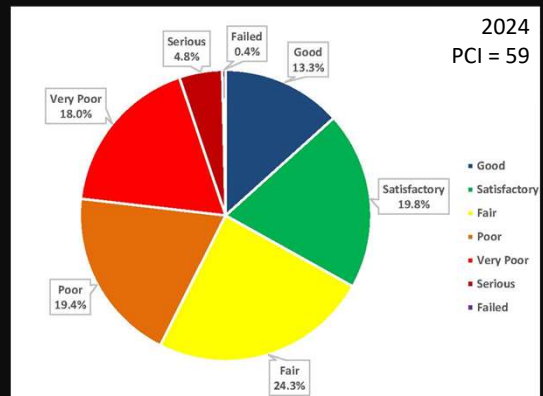
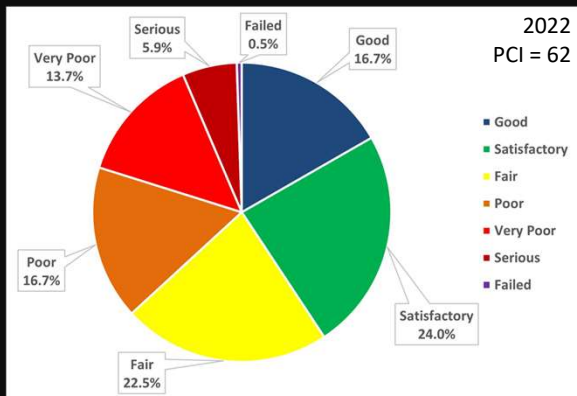


Figure 11. Pavement in *Failed* condition category (PCI 10-0).

Failed

3

Carson City PCI Comparison



4

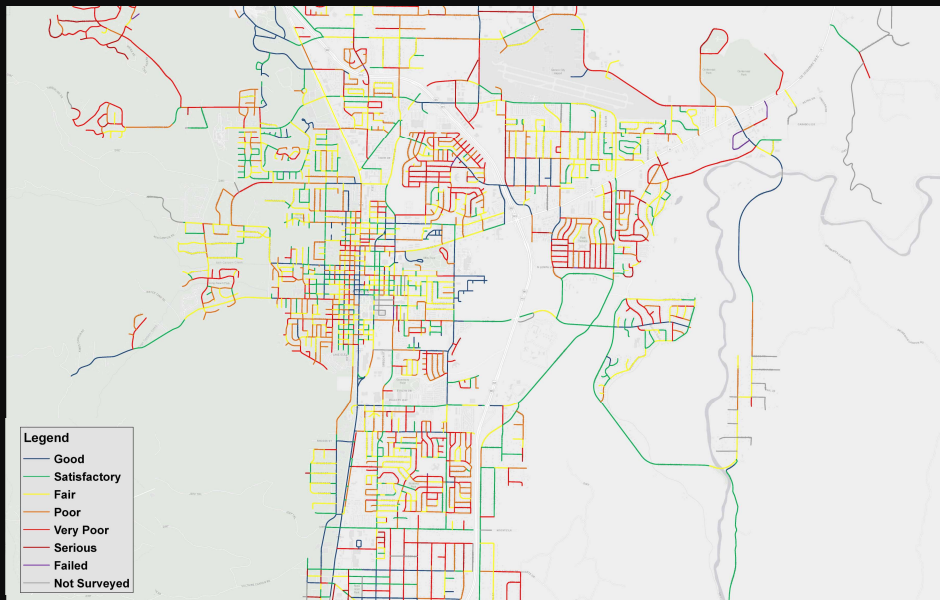
Carson City Report Card

Table 6: 2015 to 2024 condition report card.

Facility Type		Pavement Condition Index (PCI) - Annual Report Card											Percent Change 2022 to 2024	Percent Change 2015 to 2024
		Insp. PCI	Est. PCI	Insp. PCI	Est. PCI				Insp. PCI	Est. PCI	Insp. PCI			
		2015	2016	2017	2018	2019	2020	2021	2022	2023	2024			
City-wide	Regional Roads	68	68	67	68	67	67	63	74	67	69	-7%	1%	
	Local Roads	63	62	61	59	57	53	49	56	49	54	-3%	-14%	
	All Roads	65	64	63	62	60	58	54	62	55	59	-4%	-8%	
Performance District 1	Regional Roads	68	67	67	66	66	62	56	69	60	59	-14%	-13%	
	Local Roads	62	62	62	60	56	52	48	57	50	54	-6%	-14%	
	All Roads	64	64	64	62	59	55	51	61	53	56	-9%	-14%	
Performance District 2	Regional Roads	74	74	73	72	70	71	68	80	73	73	-9%	-1%	
	Local Roads	70	67	64	60	58	54	49	53	46	54	1%	-24%	
	All Roads	71	70	67	65	62	60	56	63	55	60	-5%	-16%	
Performance District 3	Regional Roads	75	74	72	74	74	71	68	77	68	74	-4%	-2%	
	Local Roads	53	53	57	57	57	54	51	58	53	53	-8%	1%	
	All Roads	60	60	62	62	62	59	56	64	57	60	-6%	1%	
Performance District 4	Regional Roads	58	59	61	64	62	75	69	79	74	79	-1%	36%	
	Local Roads	60	59	58	56	52	49	45	51	45	52	1%	-15%	
	All Roads	59	59	59	59	56	58	53	61	55	61	0%	3%	
Performance District 5	Regional Roads	68	67	64	63	62	58	53	65	58	61	-6%	-10%	
	Local Roads	70	68	66	64	61	57	52	60	52	60	-1%	-15%	
	All Roads	69	68	65	64	61	57	52	62	54	60	-3%	-13%	

5

Carson City PCI



6



Carson City PCI Changes

Greatest Decrease							
Road	From	To	Class	Last Survey	Change	2021 PCI	2024 PCI
Flint	Eastgate Siding	Rifle Range	Local	4/8/2021	-52	75	23
Overland	S Carson St	Cochise St	Local	4/8/2021	-47	80	33
MorganMill	Empire Ranch Rd	N Deer Run Rd	Local	4/8/2021	-45	71	26
Greatest Increase							
Winnie	N Division St	Michael Dr	Regional	4/8/2021	78	22	100
Overland	Cochise St	Voltaire St	Local	4/8/2021	55	42	97
5th	Brittiany Ct	Hidden Meadow Dr	Regional	4/8/2021	50	45	95
Other Notable Changes							
Bunch	Carmine St	Nelson Ln	Local	4/8/2021	47	47	94
Presti	Medical Py	Eagle Valley Ranch F	Local	4/8/2021	41	50	91
Mountain	W King St	W Musser St	Regional	4/8/2021	30	67	97
Race Track	Wheeler Peak Dr	Cone Peak Dr	Local	4/8/2021	-39	97	58

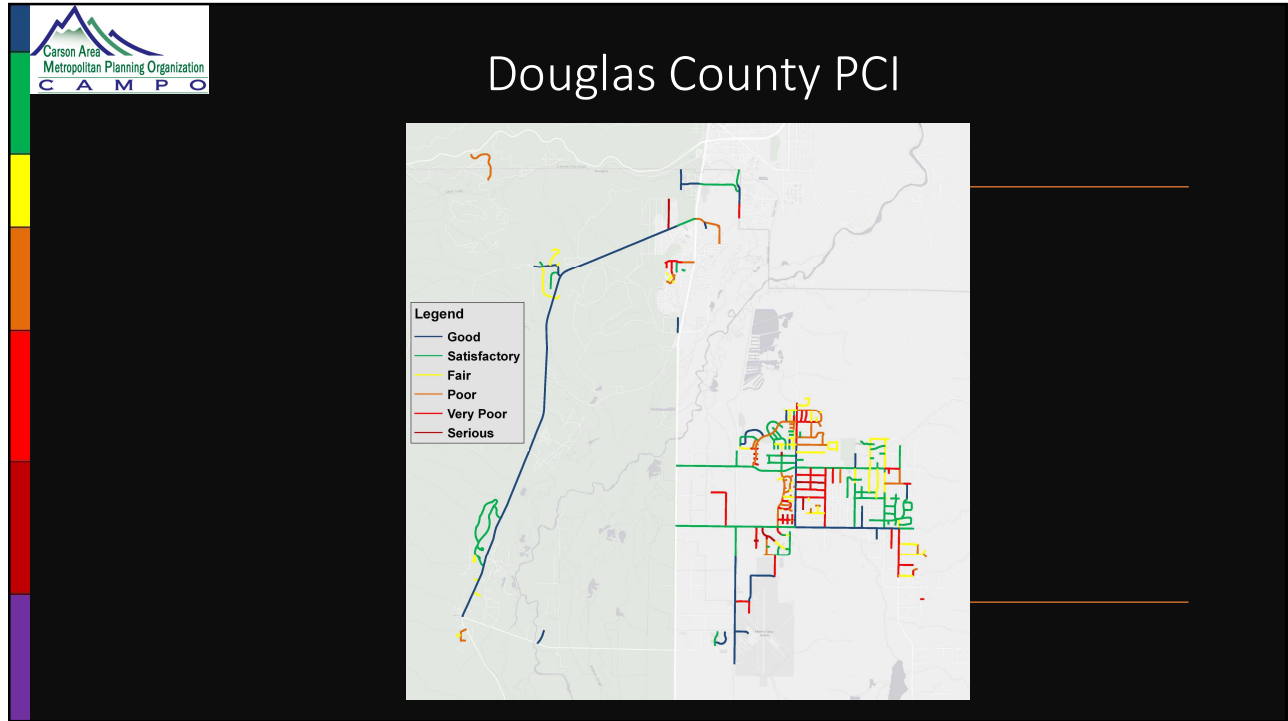
7



Douglas County Report Card

Jurisdiction	Functional Classification	Area (ft ²)	Percentage of Network	Area Weighted PCI
CAMPO	Regional	3,561,229	13%	81
	Local	7,293,707	26%	58
CAMPO Total		10,854,936	39%	66
Douglas County	Regional	6,349,689	23%	84
	Local	10,949,844	39%	61
Douglas County Total		17,299,533	61%	69

8



9

-
- Next Steps**
- Finalize data and provide it to Carson City and Douglas County
 - Complete an update to the pavement deterioration curve
 - Estimate future pavement conditions
 - Project identification and selection
 - Carson City = Performance District 3

10